

### Paris provides inspiration for talented student »

Anita Ponsaing was the 2009 recipient of the John Hodgson Scholarship, a scholarship that was made possible by a bequest from Iona Hodgson, in memory of her son, John. John received his Bachelor of Science from the University of Melbourne in 1957. He tragically passed away at age 23 as a result of a mountain climbing accident.

Anita, a postgraduate student in the Faculty of Science, used the scholarship to spend a trimester at the Henri Poincare Institute in Paris studying topics very close to her PhD thesis on lattice models in statistical physics. Anita's supervisor Jan De Gier nominated her for the scholarship. Of her nomination, he said, "Anita was a very dedicated student and published a paper in a top journal just one year into her PhD studies. She is also a very active student member, having been president of the maths graduate student group in 2009 and also working with a high school student through Melbourne University's Mentor Program for Highly Able Secondary Students."

Anita has grabbed the opportunity with both hands. "This trip has really opened my eyes to both the role of one mathematician in the greater realm of science, and also to the role of science in society as a whole. It's hard to say how glad I am to have been given this opportunity. I plan to take full advantage of the drive it's given me."

"The inspiration has spilled over into my own work and my plans for the future, and I now feel more able to make something of them."

"Being so far away from familiar faces and surroundings really forced me to concentrate on my work, and it also stoked my general interest in the other sciences that I'm keen to explore in the near future," said Anita.

» Left: Anita studying at the University of Melbourne

» Below and Right: Anita enjoying her time as a student in Paris



*"It's hard to say how glad I am to have been given this opportunity. I plan to take full advantage of the drive it's given me."*



## A little goes a long way »



» Above: Scholarship recipient Amber Jain

A little goes a long way as Amber Jain, the 2009 winner of a University of Melbourne Commerce Alumni Scholarship, knows well. Amber was awarded a scholarship of \$2000 for his final year of study. The scholarship is funded by donations from Commerce Alumni and is a focus of fundraising activities at alumni reunions.

The Scholarship is open to all students of the Faculty of Business and Economics, and the recipient is selected based on demonstrated community involvement and leadership potential. Amber has found that the scholarship has presented him with many possibilities. "The very process of being selected for the scholarship was a learning experience. It gave me an opportunity to interact with the faculty alumni."

For the past year, Amber has been the public relations officer and an executive committee member of the Student Association. "Besides being a financial award, the scholarship helped me gain a renewed confidence in myself. It also served as an encouragement to my ability of balancing my studies with other co-curricular activities. This ability has been an asset in facilitating my personality and skill development." Amber selected the Graduate School of Business and Economics for its career and academic enrichment opportunities, and he used every one that came his way. After taking up an internship advertised through the career centre, "I was offered a full-time job with a firm, starting right after I graduate".

## Generosity against the odds »

A report from the Deputy Vice-Chancellor (University Affairs)



While many leading universities reported declines in giving in 2009, The University of Melbourne was fortunate to benefit from a 14% increase in total donations and gifts. Donor numbers grew to over 4,500, and a pleasing outcome was to see an increase in the number of alumni donors.

Our alumni engagement continues to expand, with annual events now held in most capital cities and several Victorian regional centres. Over 9,500 alumni attended our events during 2009 – a rise of 52% on the previous year. This included over 500 alumni registering for the Festival of Ideas, a sellout Potter Museum tour series and 1500 attendees for 'A Night at Pompeii.'

Our focus for the coming year is to work towards launching the 'University of Melbourne Campaign', the first campus-wide fundraising campaign at the University in over 50 years. You will hear more from us about the goals of this Campaign over the coming months. Meanwhile, to all our supporters whose names appear in these pages, and indeed to everyone who gave to us in 2009, my heartfelt thanks.

Professor Warren Bebbington  
Deputy Vice-Chancellor  
(University Affairs)

## Law student benefits from donor's varied gifts »

When alumna Christine McCarthy (LLB 1976, LL.M (CW) 2000) was fresh out of law school, she met many people in the legal profession who helped her get a start with her career.

More than 30 years on, Ms McCarthy is now Senior Legal Counsel for Worksafe and an Ombudsman with the Financial Ombudsman Service – and she says it's now her turn to help someone else starting out.

Already a donor to the Law School, Ms McCarthy took up the opportunity to become a mentor, and is now among 144 law graduates who volunteer their time to the new *Melbourne Law School Mentor Program*. The program was developed



» Above: Christine McCarthy has enjoyed the opportunity to mentor student Bin Hao

by the Law School's Careers Office to support first-year Juris Doctor students, and is designed to provide a link into the profession and exposure to the practical realities of working in law.

Ms McCarthy was paired with first-year student Bin Hao in May 2009, and they have been working on organising a seasonal clerkship for him. Ms McCarthy has donated money to the University in recent years, and says mentoring is just another way of giving back. "A lot of people helped me along the way and to me this is a time and place where I can help others," she says. "Bin is probably much smarter than me – but I've got more life experience than him. It's nice to realise that I can put that experience to good use to help him."

Melbourne Law School's Associate Dean (JD), Pip Nicholson, says that many alumni see the program as a more personal way of helping students. "Some people bequeath money for scholarships, but many also like having the opportunity to assist a student and share insights gleaned from years of experience."

If you have a law qualification and are interested in becoming a mentor in 2011, please contact Program Coordinator Helen Green on +61 3 8344 1000 or via email at [h.green@unimelb.edu.au](mailto:h.green@unimelb.edu.au), or register online at [www.careers.law.unimelb.edu.au](http://www.careers.law.unimelb.edu.au).



## University Fund Annual Appeal 2009 »

The University Fund Annual Appeal entered its 20th year in 2009 and remains the cornerstone of philanthropic support at the University of Melbourne. Through the Fund, our alumni and friends provide annual support for the University's highest priorities, which often include ensuring that the best and brightest students study at the University regardless of their circumstances.

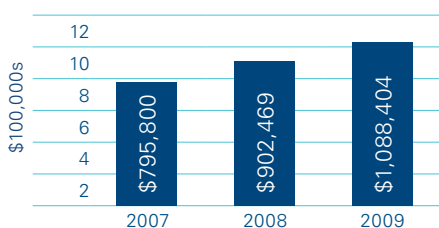
Total annual giving in 2009 increased by 20% with a significant increase in the number of individual donors who continued to show strong support for assisting both students with both immediate financial needs and long term scholarship support.

### Annual Appeal 2007-2009 breakdown

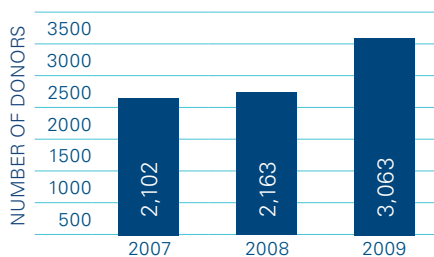
	2007	2008	2009
	\$	\$	\$
University Fund	582,574	622,814	904,206
University Council Donations	122,500	113,125	117,250
Staff Appeal	32,839	34,531	36,665*
Student Appeal	3,464	3,685	9,097
USA Foundation	54,423	128,314	21,186
<b>Total</b>	<b>795,800</b>	<b>902,469</b>	<b>1,088,404</b>
New donors	223,445	189,191	250,555

\*Part of a total of \$621,486 donated to projects across the University by 195 staff

### Annual Fund donations 2007-2009



### Annual Fund donors 2007-2009



### 2009 Annual Appeal Allocations

Gifts to the University Fund are allocated according to the wishes of our donors. Students, faculties, research, libraries and cultural collections all benefited from the generosity of our friends in 2009.

Architecture, Building & Planning	\$19,837
Arts	\$32,889
Asialink	\$14,500
Business & Economics	\$22,536
Education	\$3,779
Engineering	\$83,688
Ian Potter Museum of Art	\$12,500
Land & Environment	\$9,679
Law	\$55,103
Medicine, Dentistry & Health Sciences	\$84,824
Medley Hall	\$1,000
Science	\$26,115
Sport	\$57,450
Veterinary Science	\$20,095
Victorian College Of The Arts and Music	\$35,481

### University-wide

Highest Priorities (immediate assistance for students in financial need)	\$297,001
Highest Priorities (long term support for scholarships)	\$181,262
Financial Aid	\$13,433
Library & Cultural Collections	\$17,254
Research	\$20,829
Scholarships & Bursaries	\$70,724
Other	\$8,425
<b>TOTAL:</b>	<b>\$1,088,404</b>

## Scholarship inspires top student to obtain PhD »

For Daniel Taft, being awarded the Elizabeth and Vernon Puzey Graduate Research Scholarship from March 2006 until August 2009 affirmed his interest in pursuing a Doctor of Philosophy.

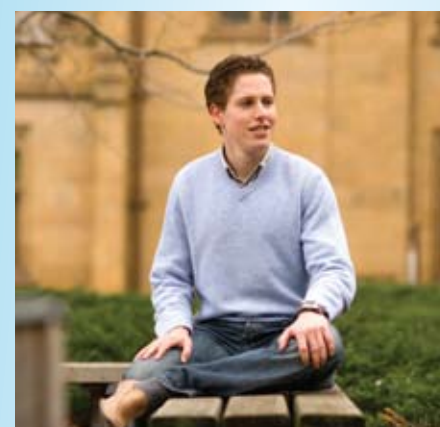
Daniel Taft will have his PhD conferred in March this year, in recognition of his research into having the cochlear implant (bionic ear) better mimic sounds so that users of the implant could achieve more realistic hearing.

Daniel was also awarded the Dixon Scholarship in Engineering in June 2009. The Dixon Scholarship allowed him to focus on writing a journal article once his PhD was submitted and being considered by the examiners. The article has been accepted by Institute of Electrical Engineers (IEE) *Transactions on Biomedical Engineering* journal.

"The journal is an international publication which means that my research will be widely available to other researchers. It also gives me some professional recognition for my work." No doubt Daniel's work will also contribute to the University of Melbourne maintaining its reputation as a leader in the field of cochlear implant technology.

While the research has allowed Daniel to further his own career, it has also generated the potential to improve the hearing quality of thousands worldwide who rely on cochlear implants.

» Below: Daniel Taft on campus.  
Photo courtesy of the Bionic Ear Institute



## Mapping a digital future for precious collections »

Nobody understands the importance of donations to the University's map collection more than Dorothy Prescott. The University's former map librarian was given the task of building the collection from scratch in 1964, without having any budget set aside for the task.

With a lot of hard work and persuasion, Dorothy Prescott relied largely on the generosity of businesses and organisations to develop the collection. By the time she left the University in 1979, she had gathered more than 42,000 maps.

Two decades on, the shoe is on the other foot. Dorothy Prescott is no longer asking for donations – she and her husband Victor Prescott (MA 1970), a Professor Emeritus of the Department of Geography, are now donating to the University Library, to ensure the map collection is shared with the world.

The couple is supporting the Library's new digitisation initiatives, which will see the launch of a Digitisation Centre. It will house the high quality Zeutschel Omnican 14000 A1 scanning equipment that is unique in Australia, and was selected for its capability in preservation-standard digitisation.

The Prescotts have donated to this area of the Library because they believe it is important for the University's collections to be made available online. "I've always complained bitterly that the national map collection is located in Canberra, when it should be in a large population centre like Melbourne or Sydney – but now it doesn't matter," Dorothy Prescott said. "Digitisation will make collections available to a global audience."

Digitisation of the Library's collections is set to benefit researchers and professionals from a diverse range of fields, as well as the wider community. "It will be useful to everyone – anyone who needs to use a map, look at fine art, graphs or even engineering plans, such as architects," Dorothy Prescott said. It will also ensure the University's precious collections last longer, as there will be less need for researchers to handle original items.

On top of their financial donation, the Prescotts have also given the University a number of British Admiralty charts from their



» Above: Victor and Dorothy Prescott examine a map on the scanner

personal collection. "I believe once you've got material you no longer use, it's very nice if someone who wants it can have it," Dorothy Prescott said. "A library is the obvious place to put it – and being intimately connected with the University Library, the obvious place for it to go was in the University's collection."

University Librarian Philip Kent said the Prescotts' donations were "greatly valued and appreciated", as the Library relied on the generosity of donors to achieve its goals. "Fundraising at this point in time is vital to the future of the Library, and this is a very personal way in which people can connect with the Library," he said. "We have a lot of exciting projects envisaged for the future, including digitisation...and we're very grateful that our donors see this as a priority and support our vision for expansion and development of the Library."

## For more information about giving to the University »

### The Annual Appeal

Ms Lucy Moore  
Manager, Annual Giving  
l.moore@unimelb.edu.au  
+61 3 8344 1756  
Web: [www.unimelb.edu.au/alumni/giving/unifund.html](http://www.unimelb.edu.au/alumni/giving/unifund.html)

### The Bequest Program and The Heritage Society

Ms Sue Girling-Butcher  
Bequest Manager  
Advancement Office  
s.girling-butcher@unimelb.edu.au  
+61 3 8344 1056  
Web: [www.unimelb.edu.au/alumni/giving/bequests/](http://www.unimelb.edu.au/alumni/giving/bequests/)

### For more information about supporting The University of Melbourne:

Advancement Office  
The University of Melbourne  
VICTORIA 3010, Australia  
Email: [donor-relations@unimelb.edu.au](mailto:donor-relations@unimelb.edu.au)  
Tel: +61 3 8344 1751  
Fax: +61 3 9348 0013  
Web: [www.unimelb.edu.au/giving](http://www.unimelb.edu.au/giving)